

**WHITEWATER SEWAGE TREATMENT PLANT  
MODEL No. DF50FF**

**Volumetric Capacity**

3.5 cu. m. (770 imp. Gals.)

**Operating Conditions**

1.89 cu.m. (416 imp. Gals.)  
per day ADF

**Aeration Chamber**

2.4 cu.m. (533 imp gals)  
min. 24 hrs. hydraulic detention time

**Clarifier**

1.04 cu.m. (230 imp. gals)  
8 hrs. hydraulic detention time  
at ADF rate

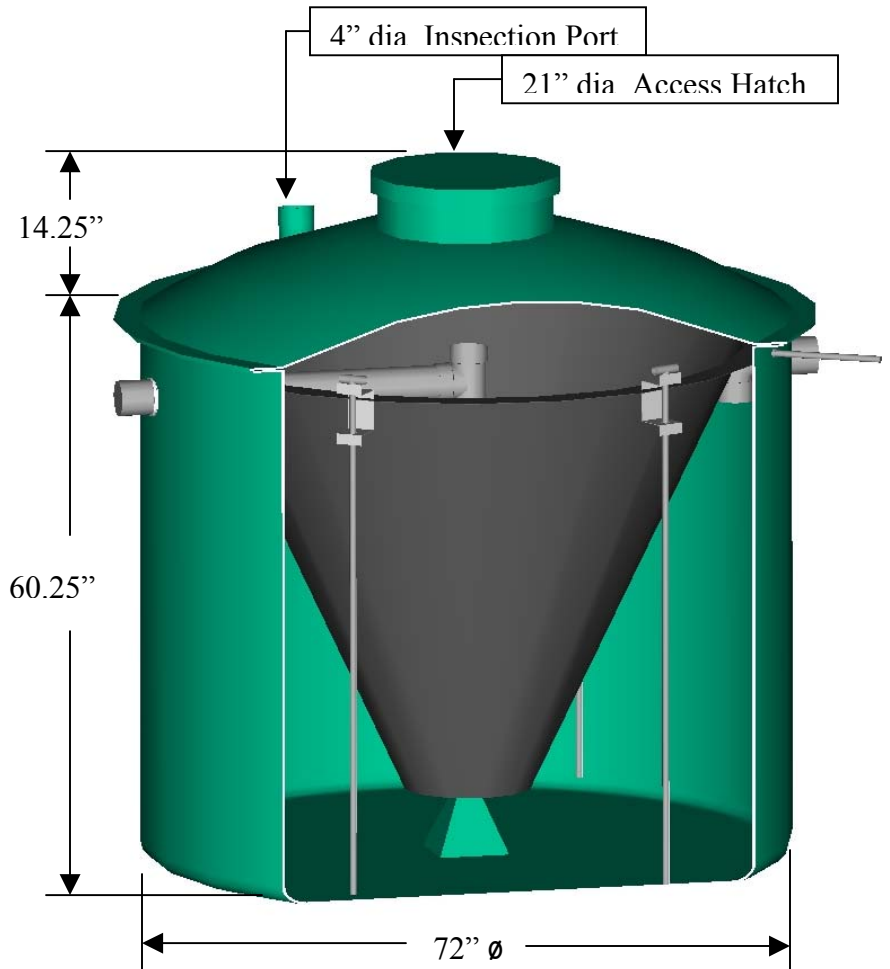
0.400 cu.m. (88 imp. Gals.)  
stored treated effluent  
ready for discharge.

**Aeration Blower / Compressor**

59.47 cu. m. (2100 cu. ft.) per kg. (lbs.)  
of BOD<sub>5</sub> influent.

**Influent quality of domestic sewage**

|                    |            |
|--------------------|------------|
| BOD                | 250 mg./L  |
| SS                 | 250 mg./L. |
| Fats, Oils, Grease | 10 mg /L   |

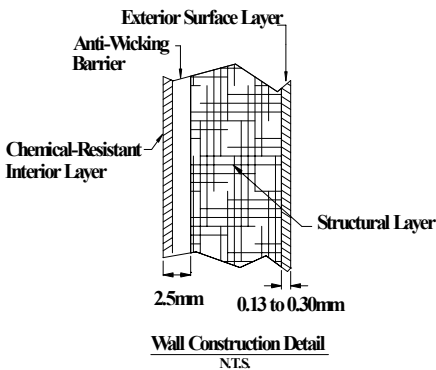


**Elevations– inlet –outlet**

Invert of inlet, elevation – 53.25 in.

Invert of outlet, elevation – 50.25 in.

**Air Blower to be linear type, placed in weather proof, ventilated enclosure, (crawl space, garage etc.).  
No more than 100 feet from the Whitewater Treatment Plant.**



**WHITewater SEWAGE TREATMENT PLANT  
MODEL No. DF60FF**

**Volumetric Capacity**

4.4 cu. m. (955 imp. Gals.)

**Operating Conditions**

2.27 cu.m. (500 imp. Gals.)  
per day ADF

**Aeration Chamber**

3.2 cu.m. (707 imp gals)  
min. 24 hrs. hydraulic detention time

**Clarifier**

1.13 cu.m. (248 imp. gals)  
8 hrs. hydraulic detention time  
at ADF rate

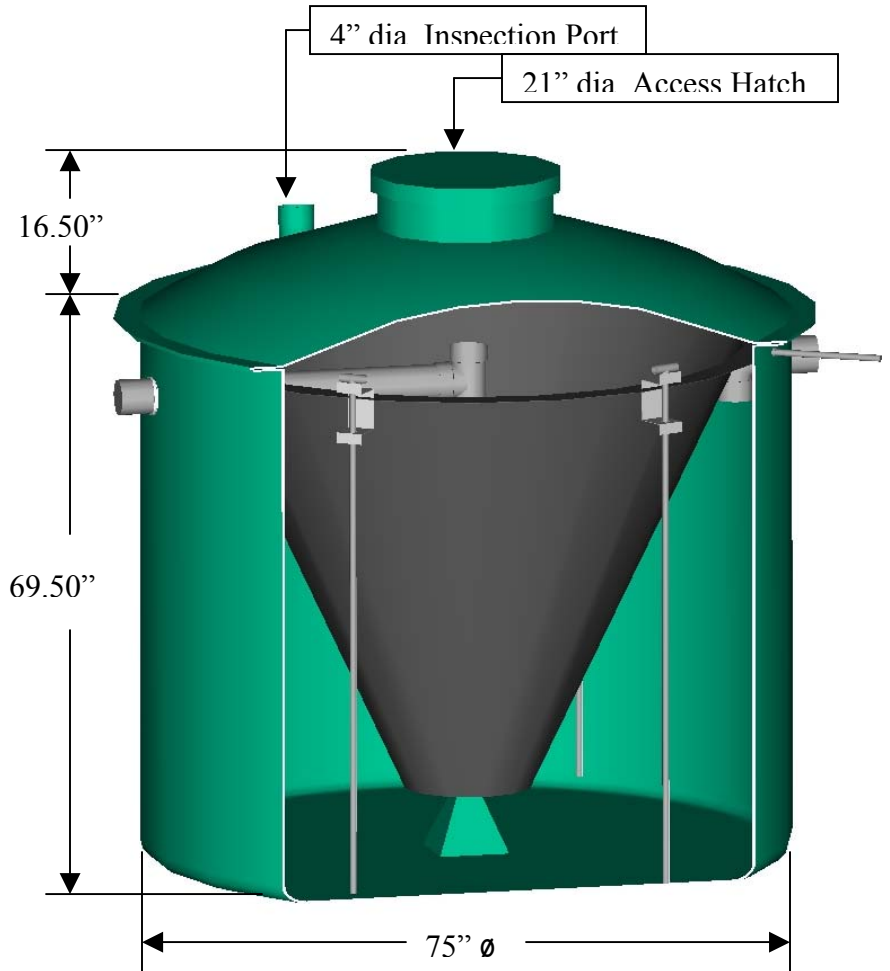
0.481 cu.m. (106 imp. Gals.)  
stored treated effluent  
ready for discharge.

**Aeration Blower / Compressor**

59.47 cu. m. (2100 cu. ft.) per kg. (lbs.)  
of BOD<sub>5</sub> influent.

**Influent quality of domestic sewage**

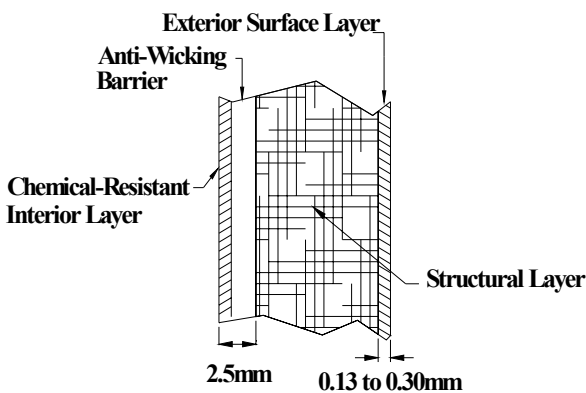
|                    |            |
|--------------------|------------|
| BOD                | 250 mg./L  |
| SS                 | 250 mg./L. |
| Fats, Oils, Grease | 10 mg /L   |



**Elevations– inlet –outlet**

Invert of inlet, elevation – 65.00 in.

Invert of outlet, elevation – 62.00 in.



**Wall Construction Detail**  
N.T.S.

**Air Blower to be linear type, placed in a weather proof, ventilated enclosure, (crawl space, garage etc.).**

**No more than 100 feet from the Whitewater Treatment Plant.**

**WHITEWATER SEWAGE TREATMENT PLANT  
MODEL No. DF75FF**

**Volumetric Capacity**

5.44 cu. m. (1,197 imp. Gals.)

**Operating Conditions**

2.84 cu.m. (625 imp. Gals.)  
per day ADF

**Aeration Chamber**

3.8cu.m. (847 imp gals)  
min. 24 hrs. hydraulic detention time

**Clarifier**

1.59 cu.m. (350 imp. gals)  
8 hrs. hydraulic detention time  
at ADF rate

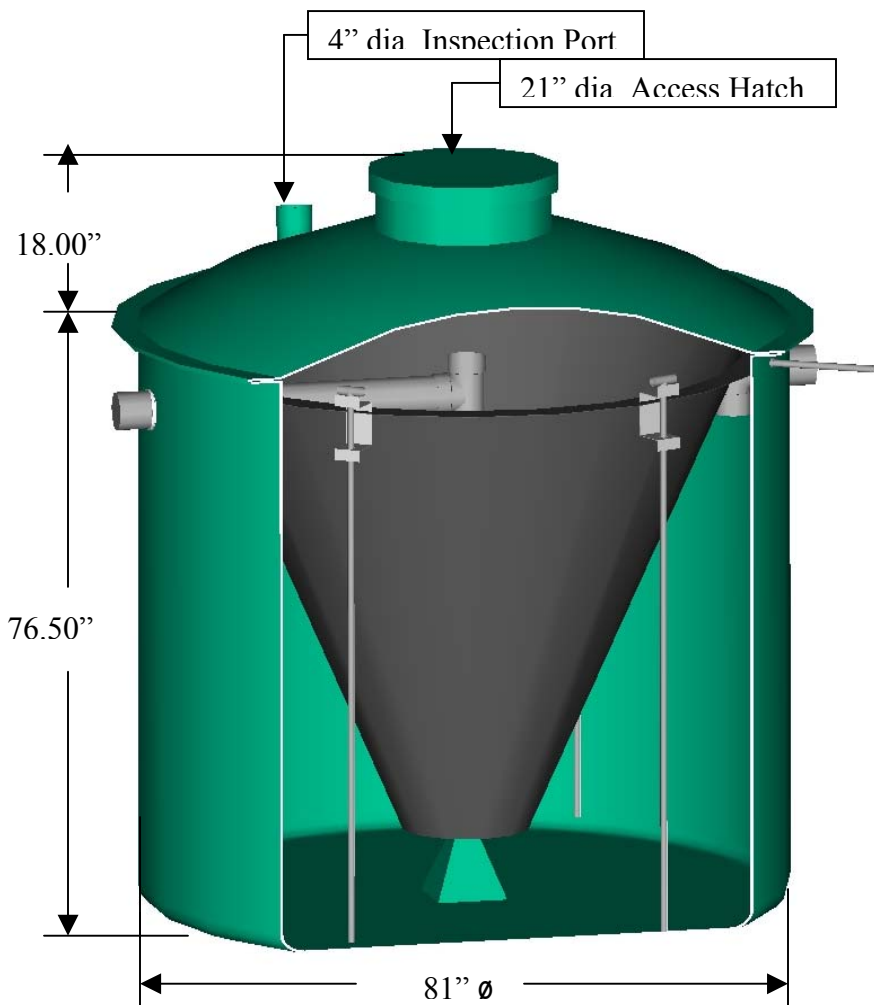
0.600 cu.m. (132 imp. Gals.)  
stored treated effluent  
ready for discharge.

**Aeration Blower / Compressor**

59.47 cu. m. (2100 cu. ft.) per kg. (lbs.)  
of BOD<sub>5</sub> influent.

**Influent quality of domestic sewage**

|                    |            |
|--------------------|------------|
| BOD                | 250 mg./L  |
| SS                 | 250 mg./L. |
| Fats, Oils, Grease | 10 mg /L   |



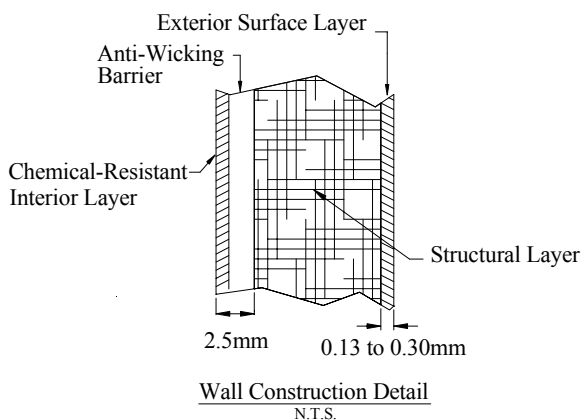
**Elevations– inlet –outlet**

Invert of inlet, elevation – 71.50 in.

Invert of outlet, elevation – 68.50 in.

Air Blower to be linear type, placed in a weather proof, ventilated enclosure, (crawl space, garage etc.).

No more than 100 feet from the Whitewater Treatment Plant.



**WHITEWATER SEWAGE TREATMENT PLANT  
MODEL No. DF100FF**

**Volumetric Capacity**

7.29 cu. m. (1,605 imp. Gals.)

**Operating Conditions**

3.78 cu.m. (833 imp. Gals.)  
per day ADF

**Aeration Chamber**

5.4 cu.m. (1,188 imp gals)  
min. 24 hrs. hydraulic detention time

**Clarifier**

1.85 cu.m. (407 imp. gals)  
8 hrs. hydraulic detention time  
at ADF rate

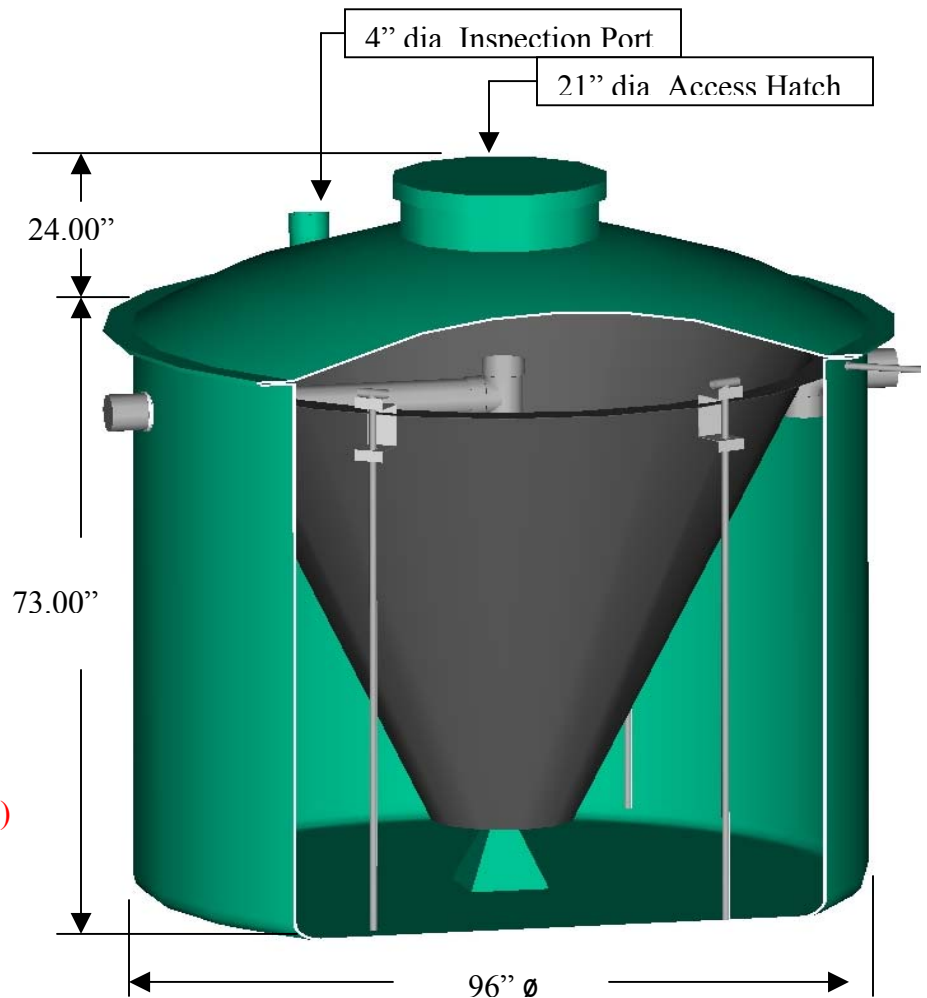
0.799 cu.m. (176 imp. Gals.)  
stored treated effluent  
ready for discharge.

**Aeration Blower / Compressor**

59.47 cu. m. (2100 cu. ft.) per kg. (lbs.)  
of BOD<sub>5</sub> influent.

**Influent quality of domestic sewage**

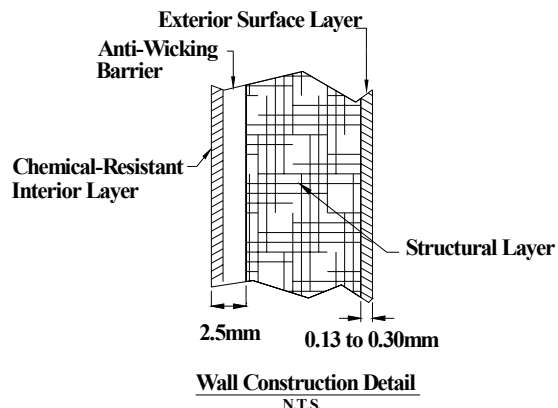
|                    |            |
|--------------------|------------|
| BOD                | 250 mg./L  |
| SS                 | 250 mg./L. |
| Fats, Oils, Grease | 10 mg /L   |



**Elevations– inlet –outlet**

Invert of inlet, elevation – 68.50 in.

Invert of outlet, elevation – 65.50 in.



**Air Blower to be Rotary Vane type, placed in a weather proof, ventilated enclosure, (crawl space, garage etc.).**

**No more than 100 feet from the Whitewater Treatment Plant.**

**MODEL No. DF150FF**

**Volumetric Capacity**

10.91 cu. m. (2,400 imp. Gals.)

**Operating Conditions**

5.67 cu.m. (1,250 imp. Gals.)  
per day ADF

**Aeration Chamber**

8.0 cu.m. (1,770 imp gals)  
min. 24 hrs. hydraulic detention time

**Clarifier**

2.86 cu.m. (630 imp. gals)  
8 hrs. hydraulic detention time  
at ADF rate

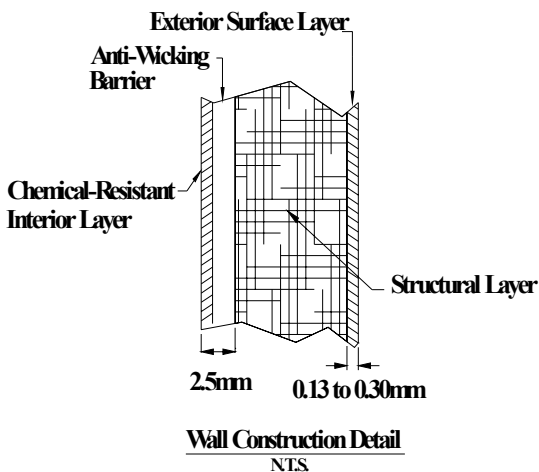
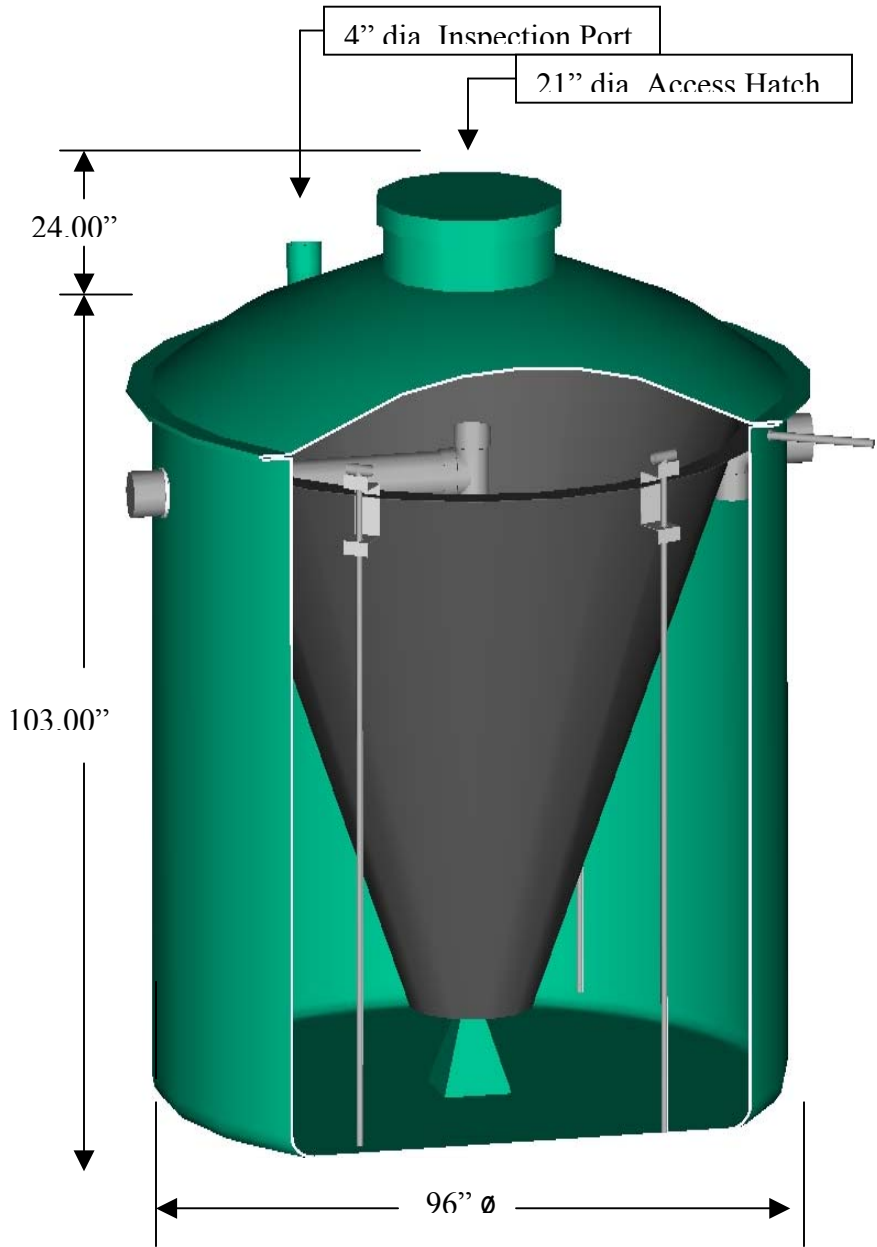
1.2 cu.m. (264 imp. Gals.)  
stored treated effluent  
ready for discharge.

**Aeration Blower / Compressor**

59.47 cu. m. (2100 cu. ft.) per kg. (lbs.)  
of BODs influent.

**Influent quality of domestic sewage**

|                    |            |
|--------------------|------------|
| BOD                | 250 mg./L  |
| SS                 | 250 mg./L. |
| Fats, Oils, Grease | 10 mg /L   |



**Elevations- inlet -outlet**

Invert of inlet, elevation - 98.50 in.

Invert of outlet, elevation - 95.50 in.

Air Blower to be Rotary Vane type, placed in a weather proof, ventilated enclosure, (crawl space, garage etc.).

No more than 100 feet from the Whitewater Treatment Plant.