

**WHITEWATER SEWAGE TREATMENT PLANT  
MODEL No. DF100FF**

**Volumetric Capacity**

7.29 cu. m. (1,605 imp. Gals.)

**Operating Conditions**

3.78 cu.m. (833 imp. Gals.)  
per day ADF

**Aeration Chamber**

5.4 cu.m. (1,188 imp gals)  
min. 24 hrs. hydraulic detention time

**Clarifier**

1.85 cu.m. (407 imp. gals)  
8 hrs. hydraulic detention time  
at ADF rate

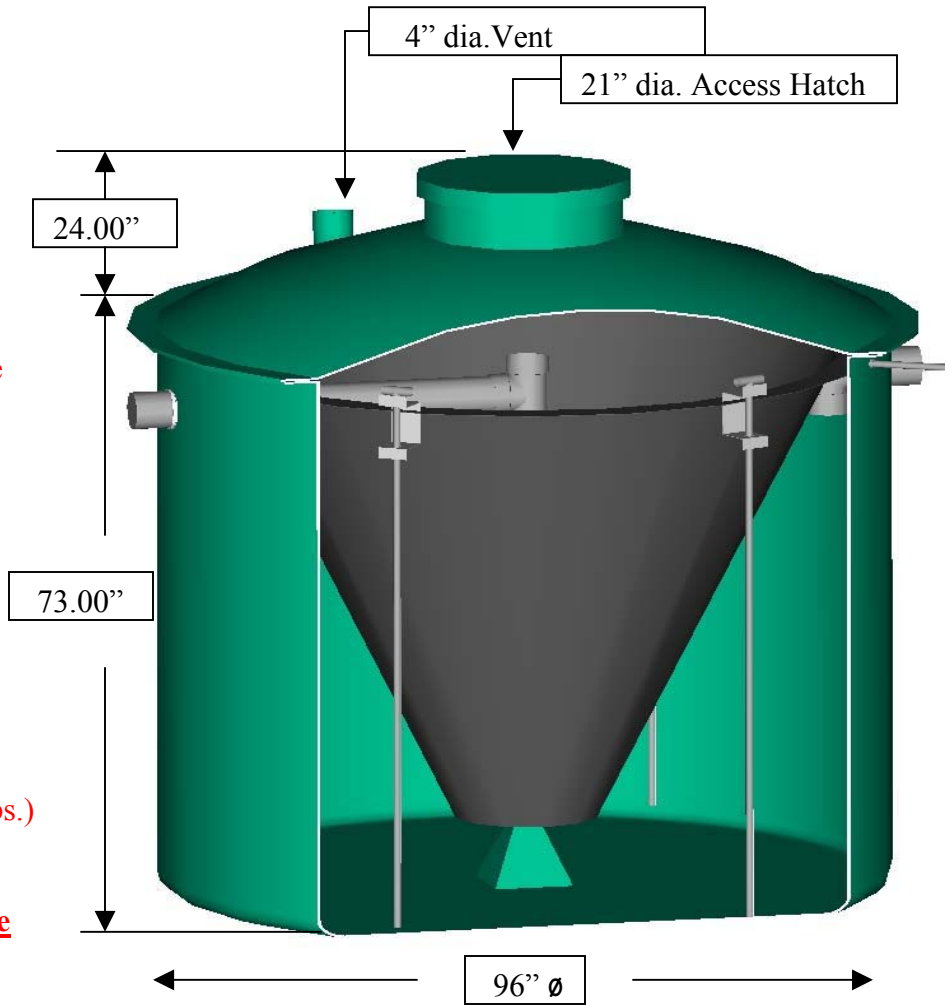
0.799 cu.m. (176 imp. Gals.)  
stored treated effluent  
ready for discharge.

**Aeration Blower / Compressor**

59.47 cu. m. (2100 cu. ft.) per kg. (lbs.)  
of BOD<sub>5</sub> influent.

**Influent quality of domestic sewage**

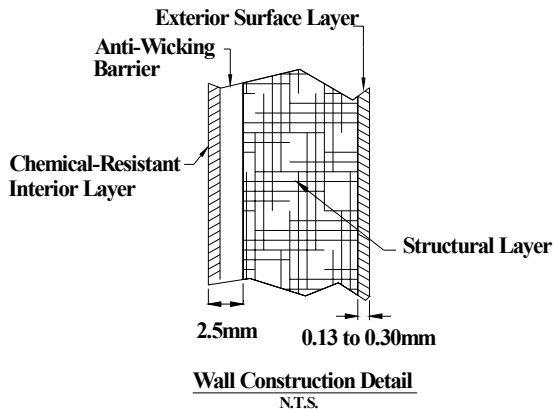
BOD	250 mg./L
SS	250 mg./L.
Fats, Oils, Grease	10 mg /L



**Elevations– inlet –outlet**

Invert of inlet, elevation – 68.50 in.

Invert of outlet, elevation – 65.50 in.



**Air Blower to be Rotary Vane type, placed in a weather proof, ventilated enclosure, (crawl space, garage etc.).**

**No more than 100 feet from the Whitewater Treatment Plant.**