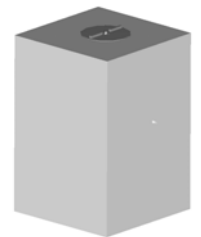


POLYETHYLENE LOAF / RECTANGULAR TANKS

MODEL No.	Imp. Gal	US Gal	Liters	Dimensions (inches)		
				W	L	H
RK7	7	8.4	3.8	6.5	9.25	31.5
RK49	50	60	227	21	21	31.5
RK80	81	97.2	368	49 diameter		12
RK50	50	60	227	23	35	19
RK100	100	120	455	23	48	28
RK210	210	252	955	30	58	37
RKW190	190	228	864	44	60	20
RKUT400	400	480	1,819	29	70	67
RKW500	500	600	2,273	49	82.5	36
RKW1500	1,500	1,800	7,274	92	130	45



RK7

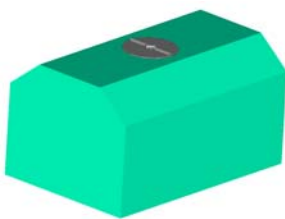


RK49



RK80

NOTE: The tank comes with the 8" or 16" diameter threaded lid.
Tank fittings are extra - see accessories for stocked typical sizes



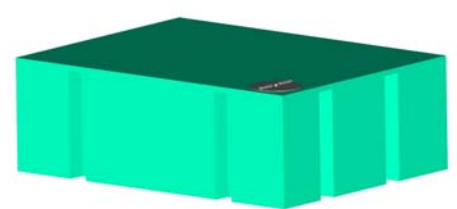
RK50L



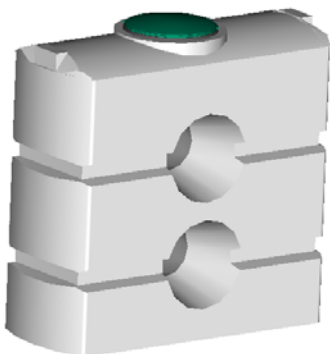
RK100L



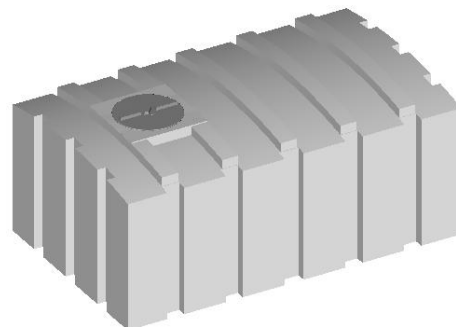
RK210L



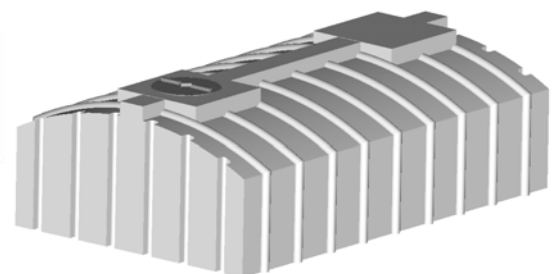
RKW190



RKUT400



RKW500



RKW1500